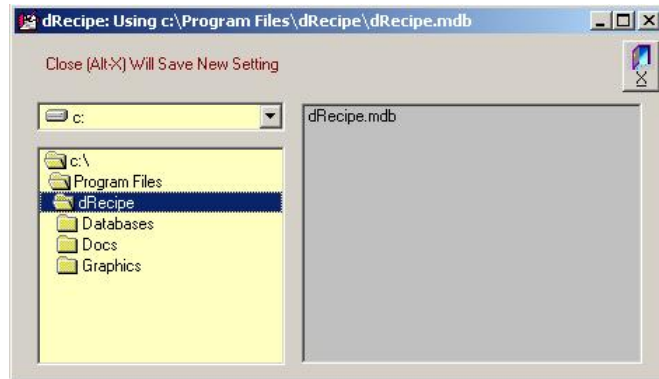


Utilities

Data Path setting

By default the program will load to display a sample database in the \dRecipe directory. Another copy is stored in \dRecipe\Databases\Sample.

When the operational database is to be loaded, dRecipe® must be told where to find it. A new (blank) database is located in the \dRecipe\Database\Working directory ready to use. To switch to this database, from the Main Menu, select Utilities, File Pathing, Data Path (**Alt-U, P, D**).



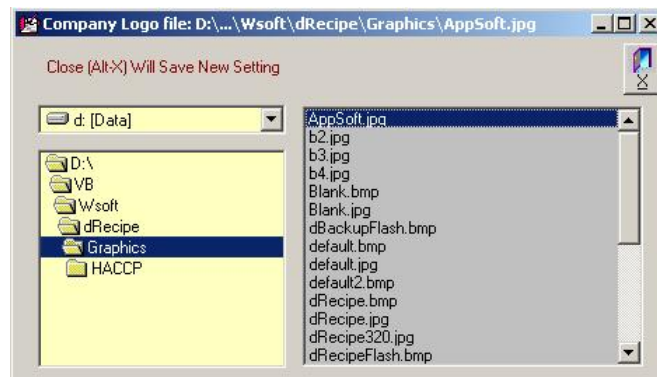
After locating the \dRecipe\Database directory, close the screen to save the new path.

Company Logo Path Setting

The recipe report permits the user to insert a custom graphic in the top left corner of a report page.

The graphic image should be either a BitMap (MyGraphic.BMP), or a JPEG (MyGraphic.JPG) file.

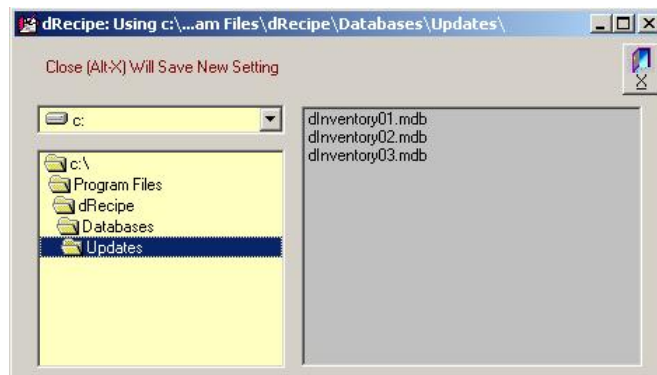
Copy the file that will be used on the report into the \dRecipe\Graphics directory, then open the path selection screen by typing AltU, P, C (click on Utilities, File Pathing, Image Path, then click on the file that is being selected and close the screen.



Update Path Setting

The default location for updates is in the \dRecipe\Databases\Updates directory. dRecipe® will look in this location for any updates unless the user specifically selects a different location from this screen.

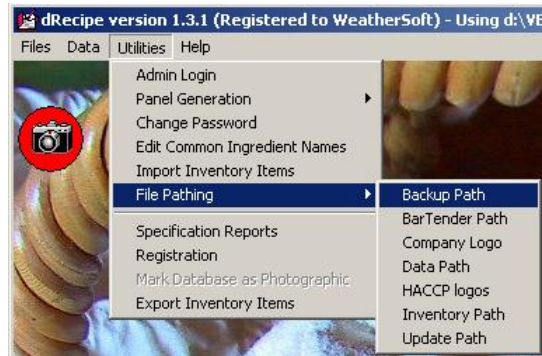
Close the screen to save any new selections for update pathing.



Backup Path Setting

The default location for backups is in the \dRecipe\Backup\Data directory.

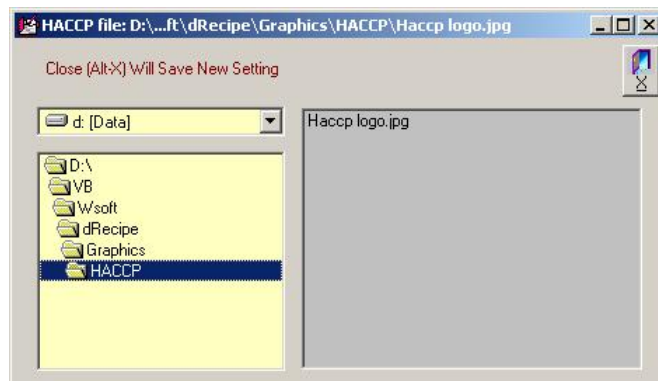
If a different location is preferred, then navigate to the new location and then close the screen to save the setting. After dBackup® has been registered, when a backup is performed, the Zip files belonging to all dRecipe® backups will be located there.



HACCP Logo Path Setting

dRecipe® expects to find all HACCP logos in a folder that is located as a sub-folder of the Graphics folder. (See [Folder layout](#))

The graphic image should be either a BitMap (MyHACCPlogo.BMP), or a JPEG (MyHACCPlogo.JPG) file. Copy the file that will be used on the report into the \dRecipe\Graphics\HACCP directory, then open the path selection screen by typing AltU, P, H (click on Utilities, File Pathing, HACCP Logos, then click on the file that is being selected and close the screen.



BarTender Path Setting

The BarTender path is set automatically by dRecipe® when this menu option is selected.

dRecipe® scans the computer drive C:\, searching for a BarTender installation. If it finds an installation, it records the location in which the BarTender executable file was found and advises you of it's success. If BarTender is not found, Label printing in the Ingredient and Nutrition panel screens will be disabled.



DesignPro Path Setting

From version 1.7.0 Avery's Label layout and printing program may be set automatically in the same way as Bartender. After DesignPro has been installed, dRecipe® can be asked to scan the computer drives to record the location of the DesignPro application

