

Photographs



Basics

With the introduction of version 1.6.0, dRecipe® is able to store a photograph for each of the recipes that have been created in the database. We suggest that all photograph images that have been generated (either with a digital camera or a scanner) are located together in a convenient folder on the computer.

All photographs must be stored in files of type **.JPG**. This format was developed for use on the internet, and the files occupy a minimal amount of space while still conveying the maximum detail. Most digital cameras and scanners can save their pictures in this format.

The easiest way to obtain pictures of the finished product (or at a critical production stage if that is what needs to be shown), is to use a digital camera to take the required photograph. If a digital camera is not available, the alternative is to use a film camera, and then digitally scan a good quality print. (Suitable low cost scanners may be purchased for under \$200).

Photographs are best taken with a resolution of between 640 x 480 and 1024 x 768 pixels. This resolution equates to a native image size of between a half to a full A4 page. Much less than this will cause the photographs in the dRecipe® reports to be indistinct and “fuzzy”, and much more will only bloat the database size, slow loading down, and will not produce any better pictures on most printers.

Registration

Unlike the rest of dRecipe® features, the photographic section of the application is not available for use by unregistered copies. This has been done to provide further protection for your files. Should your databases fall into the wrong hands, unregistered versions of this software can not be used to view or print the information stored in them.

Building a Photo Gallery

Setup

Before a database can have photographs attached to it, it must be upgraded to provide the necessary linking capability. After logging on as Administrator, go to **Utilities** and select the option “**Mark Database as Photographic**”.



dRecipe® will confirm this action before processing your database.

After confirmation that the database is to be marked as photographic, a new icon is displayed on the main screen. The Photo alert icon will only be displayed when an Administrator is logged on. Basic users have no access the photographic capabilities of dRecipe® other than in the Specification report.

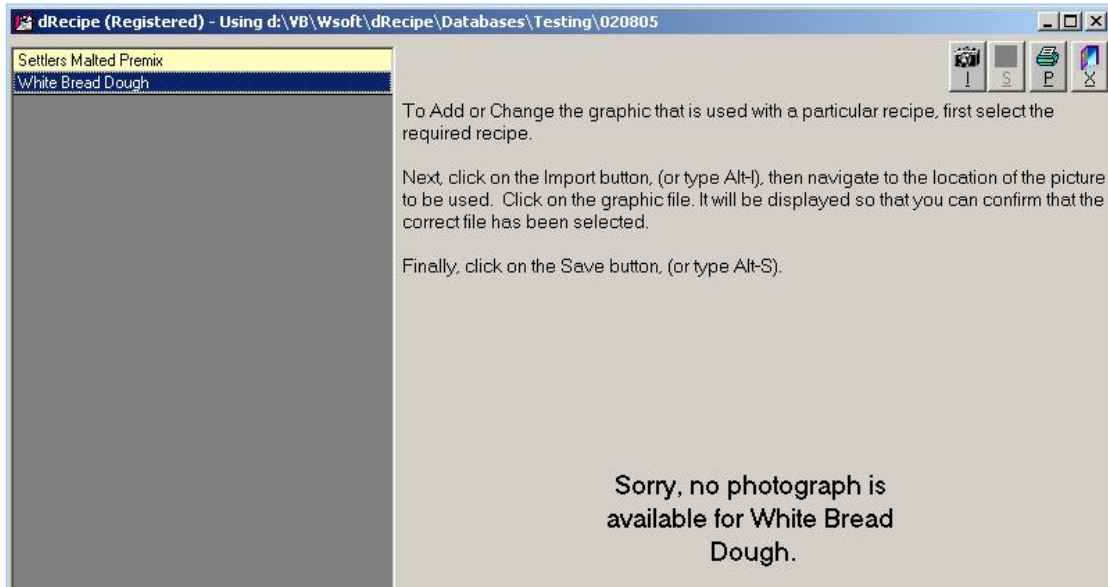


Adding the Pictures

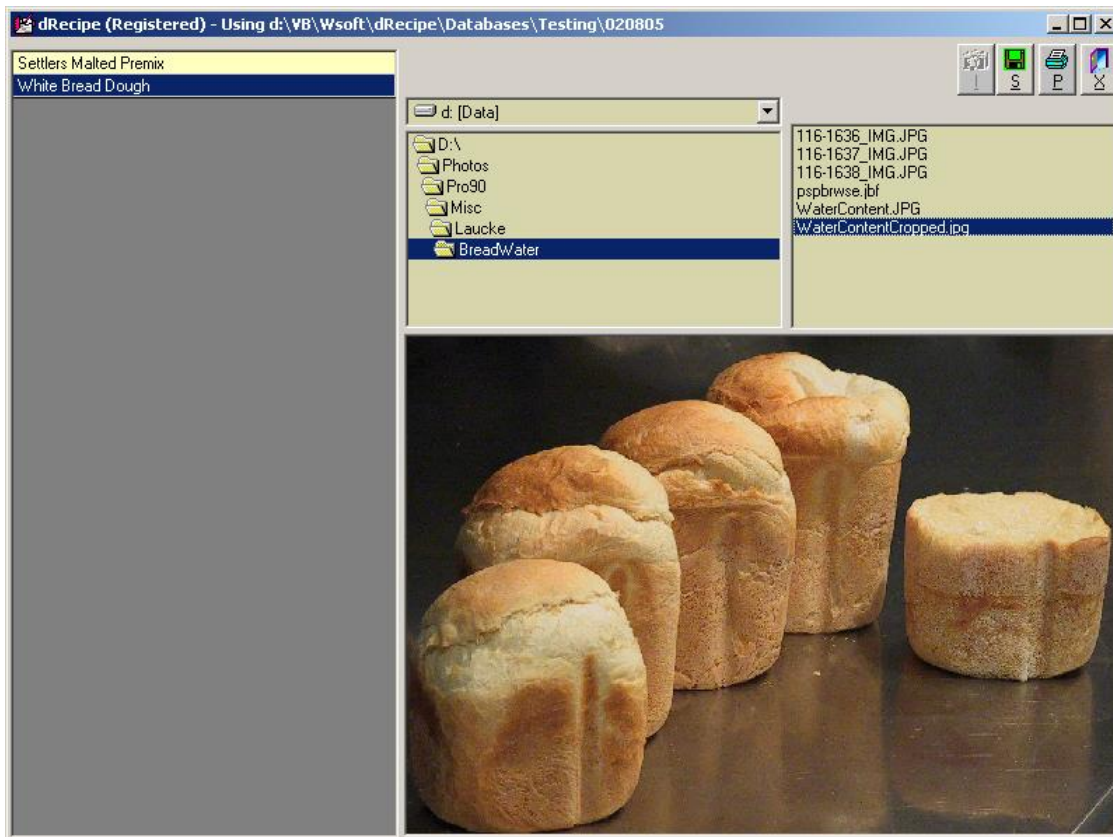
From the Main Menu click on Data, Photographs to open the setup screen. Select the required recipe (click on the name). The first time this screen is accessed, no images will have been stored in the database, so when any of the recipes are selected, they will cause the following message to be displayed.



Instructions for adding a new graphic are displayed on the screen.



To add the new picture, having selected the required recipe, click on the button with the camera icon (or type Alt-I). Browse your computer files using the file selection controls until the correct graphic is located and displayed when it is selected.



Note that the Save button has become enabled (green). Click on this to save the photograph into the database for the selected recipe. Once the graphic has been stored into the dRecipe® database, the original file can be moved or removed from the computer without destroying the recipe connection to the picture.