

Product Display Report

Background

The Product Display Report has been created to enable users to easily generate a “Point of Sale” document that can be laminated and displayed as an aid to sales.

For this report to be of any use, the dRecipe® database must first be photograph enabled, and each product for which a display report is required must have a photograph saved into the database.

As can be seen in the graphic opposite, all the information that a prospective customer might need is included on the report.


The three text overlays that are placed on the picture are fully editable, and the colour of each may be individually set and saved.

The user’s company logo is automatically placed in the bottom right corner of the report.

The report is available in two sizes

- A4 and
- A3 (for those with a large format printer, or who decide to use off site printing).

Each time a report is viewed, a PDF file (using the name of the product) is created in a folder called “Display” in the \dRecipe\PDF folder.



Batard 250g

Any filling


This week only \$1.55

Nutritional Information:

Average Quantity	PerServe	Per100g
Energy	2,702Kj	1,081Kj
Protein	19.80g	7.92g
Total Fat	3.62g	1.45g
of which - Saturated	1.05g	0.42g
Carbohydrate	127.99g	51.19g
of which - Sugars	0.87g	0.35g
Sodium	1,096.1mg	438.4mg
Potassium	none	none
Dietary Fibre	4.77g	1.91g

Allergens: This food contains Gluten, Palm-oil

Ingredients
Wheaten Flour*, Water, Yeast, Salt, Vegetable Oil(Canola), Sugar, Mineral Salts (341,516), Malt Flour, Vitamin C (300), Enzyme (1100), y

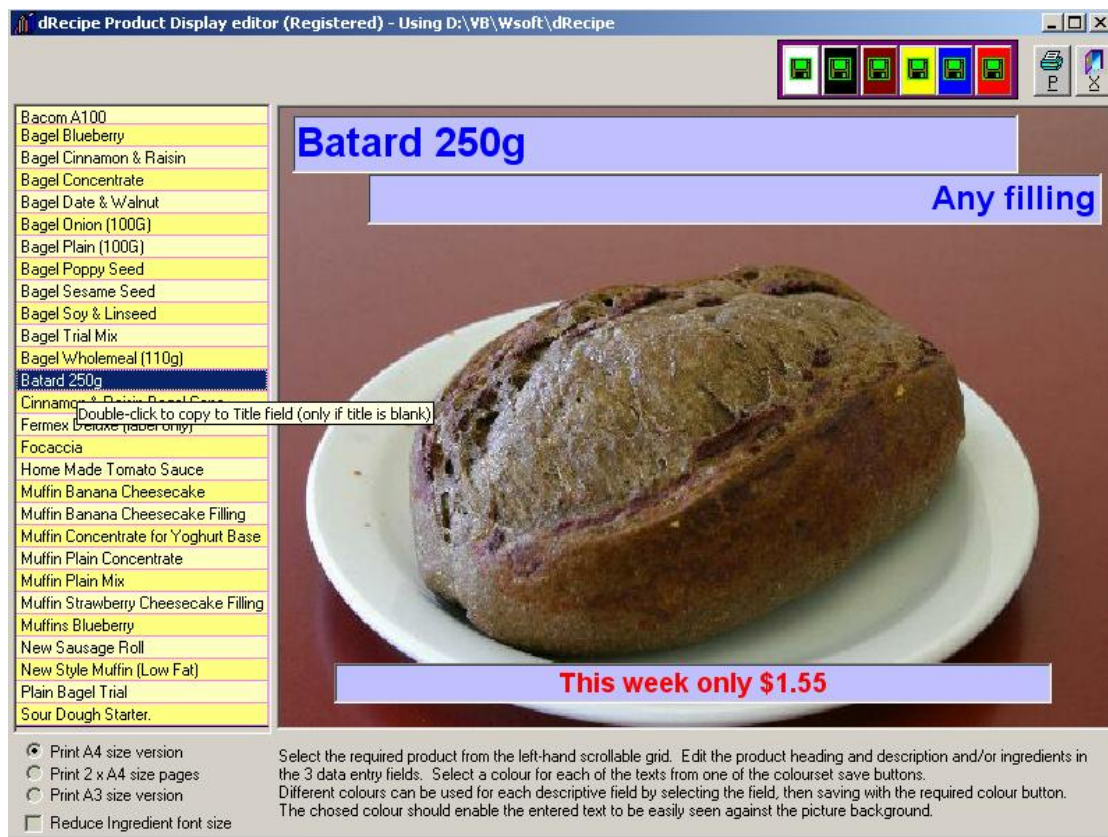


Product Display Editor

Load the editor from the Utilities menu. The selection will not be available until after the user has logged on as Administrator.

Note in the graphic opposite, the camera icon, indicating that the database is photo-enabled.





Screen Functionality

Selection

The screen opens with a product (recipe) selector down the left side of the screen. Note from the pop-up help text that if the user double-clicks on a product, the Recipe title will be copied into the first (Title) graphic overlay text field, but only if there is nothing already stored there. By clicking on any product in the selector grid, the current entry for that product will be displayed on screen.

Editing

Each of the three overlay fields may be edited as necessary. The user will be reminded that a change to any of the fields must be saved by clicking on one of the 6 coloured save buttons before moving on to the next field. The colour of the saved text should be chosen to provide plenty of contrast with the displayed graphic that will be placed behind the text. In the example above, we have used Blue over the mid brown background, and Red over the white of the plate. Red over the brown, while bright, is difficult to read because of the similar luminance of these colours.

Options

A check box marked “Reduce Ingredient font size” in the bottom left of the edit screen is used to reduce the ingredients list font size if the ingredient list will not fit on the generated report page, the font size may be reduced by about 20% by clicking on the box.

Thee option buttons permit the generated report to be changed from an A4 page to and A3 (double the size). This option will only work correctly if the connected printer supports the A3 paper size. One of the three options prints the report as two A4 landscape pages which when glued together with about a 5mm overlap will produce a large format report (A3). We suggest laminating these reports before displaying.

Exporting reports

As with all other reports in dRecipe®, this report is saved as a PDF file for emailing to clients or printers. All files generated by this report are located in the \dRecipe\PDF\Display folder. If the current database is located in a different place, then the report folder is in the \PDF\Display folder under the database folder (as in the diagram below).

