

Appendix B - Working with BarTender

Overview

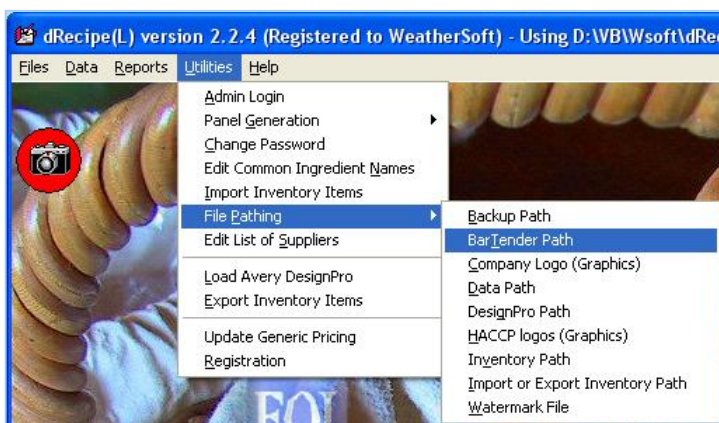
➡ **Please read and follow this section of the documentation carefully. If steps in this setup are ignored, errors will be reported, and the system will NOT work!**

With its ability to drive a massive range of label and office printers, and its ability to obtain its label data directly from a stored database, BarTender from Seagull Scientific brings automation to **dRecipe®**.

dRecipe® versions 1.3.3 and later automatically write each nutrient and ingredient label to an external non-password protected ODBC database that is accessible to BarTender. After generic label layouts have been designed, from one of the label panel screens, **dRecipe®** can ask BarTender to access its ODBC database (dRtoBT.mdb). Data from dRtoBT.mdb is inserted into the appropriate field on the formatted label. A predetermined number of labels complete with serial numbers may then be printed for the selected recipe. Not only can it obtain the required label information, but the new barcode field in the Specification screen can be accessed from the external database, and the appropriate barcode printed on each label.

Setting up to use BarTender

We assume that BarTender has been installed on the user's computer. **dRecipe®** needs to determine where BarTender has been installed. Instead of asking the user where BarTender resides, **dRecipe®** is able to scan the user's hard drive (drive C:), and if BarTender is located, store the path to the located executable for subsequent access.



After logging on as Administrator, select the Utilities/FilePathing menu and click on **BarTender path**.

dRecipe® will go off to think for a few seconds before returning with the message opposite.

Having determined that BarTender is installed on the machine, **dRecipe®** is now ready to begin writing information on each of its recipes to the BarTender database.



➡ Before continuing with dRecipe®

If the active **dRecipe®** database is located in the **dRecipe®** folder, then each of the labels that is produced will be based upon a master label template which is stored in this folder. Before proceeding to produce label formats for each recipe from this master template, it is necessary to open BarTender, and make sure that the master template contains all of your business details (Name, address etc.) and any company logos that are required. Once the label layout is acceptable, before proceeding to the next step, go to Bar Code Setup at the end of this section. Proceed to the next step only after this has been completed! Once the Bar Code format has been set, ask **dRecipe®** to produce a label format file for each of the recipes in the database.

If the active database currently in use is not located in the **dRecipe®** folder, then to force a copy of the master label template to be placed in the active database folder, go to the data-path setting screen, change the path back to the **dRecipe®** folder (double-click on the **dRecipe®** folder), close the screen, then open it again and re-set the data-path back to where it was previously set. The master label

template in the active database folder will be used only for products stored in this database. If the layout in the template in the active database folder is different from the master template in the dRecipe® folder, then it should be appropriately edited via BarTender.

Should it be necessary to make changes to individual recipe label formats (a larger label because the ingredient list is much larger, or requiring some warning statement for instance), then the particular format file may be opened by BarTender as discussed in *Printing a Label* below.

Populating the Export Databases

The export databases are initially created when dRecipe® is first loaded. If a new database and data path is created, the first time this new database is opened, export databases are created in the same location. (see *Working with multiple data sources in BarTender* in the ODBC document)



Printing a label

Before you begin.

➔ **Make sure that BarTender is not running.**

Either the Ingredient panel screen, or the Nutrient panel screen may be used for this next step in the process. We will use the Ingredient panel screen.

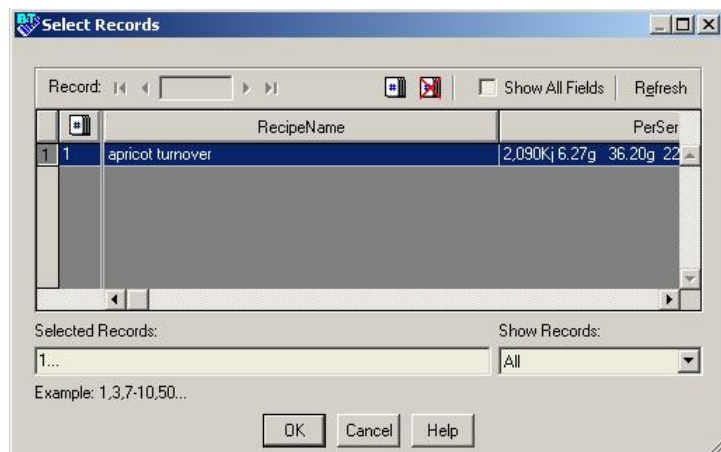
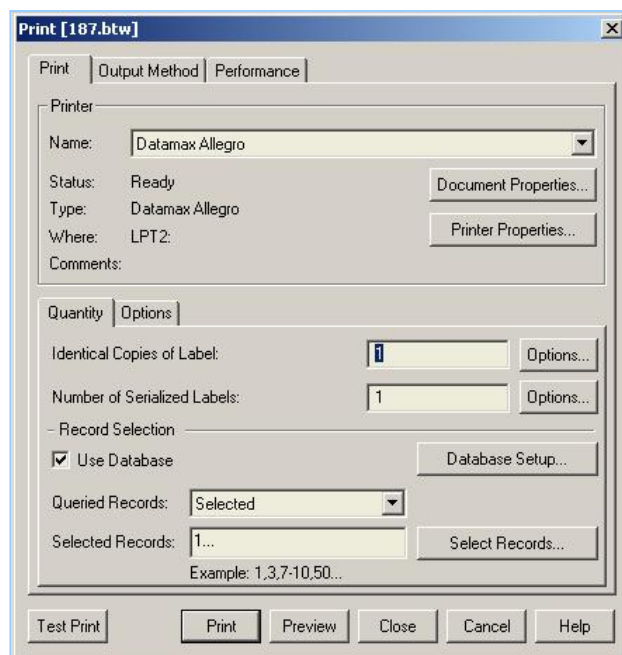
A print button is available in this screen from version 1.3.15. The print button calls the BarTender program, displaying the print dialog screen, ready to print the quantity of labels that is selected in the dialog.

If no barcode is to be used on the label, we may proceed to print a label at this stage.

Click on the Print button and wait a few seconds for the BarTender software to load. (If it has been loaded previously since the machine was started, it will load faster, since much of the required information will already be in computer memory).

The printer name will be pre-selected. (The default printer that was set up when the label format was last edited).

The Recipe for which labels will be printed will be indicated at the top of this panel (in the illustrated case, the recipe will be number 187 – the dRecipe® numeric identifier for this recipe). If the button entitled “Select Records” is clicked, the actual name of the selected recipe will be displayed.



Complete the number of copies that are required, and if the labels are to be serialised, the starting number for the serial number, then click on the Print button to produce the labels. While the labels are printing, control returns to **dRecipe®**, and the Ingredient screen is again displayed.

If a label format needs to be edited in BarTender, go to the Main Recipe screen, select the required recipe and note the recipe ID number that is displayed near the top of the recipe selection grid. Load BarTender and select Open, then navigate to the format file nnn.btw (where nnn is the number of the recipe) located in the \Format folder under the **dRecipe®** folder.

Follow the instructions provided in the BarTender user manual for design and layout of the format file.

BarTender software is produced by Seagull Scientific. It is distributed in Australia and New Zealand by Dy-Mark (Aust) Pty Ltd. General contact information is displayed below.

DY-MARK (AUST) PTY LTD ACN No. 007 645 66789	
QUEENSLAND 89 Formation Street, Wacol Queensland 4076 Australia Phone: 07 3271 2222 Facsimile: 07 3271 2751 Email: sales@dymark.com.au	NORTH QUEENSLAND Unit 1 Woolcock Retail Centre 264-278 Woolcock Street, Currajong Phone: 07 4779 9977 Facsimile: 07 4728 2255 Email: sales@dymark.com.au
NEW SOUTH WALES Unit 2, 10 Anella Avenue, Castle Hill New South Wales 2154 Phone: 02 98991000 Facsimile: 02 98991644 Email: sales@dymark.com.au	VICTORIA 10 Pinnacle Road, Altona North Victoria 3025 Phone: 03 9360 0300 Facsimile: 03 9360 0380 Email: sales@dymark.com.au
SOUTH AUSTRALIA 174 Sturt Street, Adelaide South Australia 5000 Phone: 08 8231 9787 Facsimile: 08 8231 5767 Email: sales@dymark.com.au	WESTERN AUSTRALIA Unit 3/195 Bannister Road, Canningvale Western Australia 6155 Phone: 08 9455 3303 Facsimile: 08 9455 2544 Email: sales@dymark.com.au
NEW ZEALAND 24 Ryan Place, Manukau City New Zealand Phone: 09 262 3643 Facsimile: 09 262 3676 Email: sales@dymark.com.au	TASMANIA 10 Pinnacle Road, Altona North Victoria 3025 Phone: 03 9360 0300 Facsimile: 03 9360 0380 Email: sales@dymark.com.au



Note: Faster response to sales enquiries for SA and NT may be obtained by emailing Mark Luft at markl@dymark.com.au

Dy-Mark's web page is located at <http://www.dymark.com.au/>

Adding a Bar Code

If Bar Codes are to be used, the code for each individual recipe label may be entered from the Specification screen. 12 numeric characters may be entered. (Don't forget to save the data entered before moving on to the next recipe).

Exporting to Datamax MCL enabled printers

Overview

Datamax MCL (Macro Command Language) stand alone printers are able to accept data from a delimited text database, and store this within the printer after being disconnected from the computer that is used to do the transfer. dRecipe® is able to produce a tab delimited text database for this purpose.

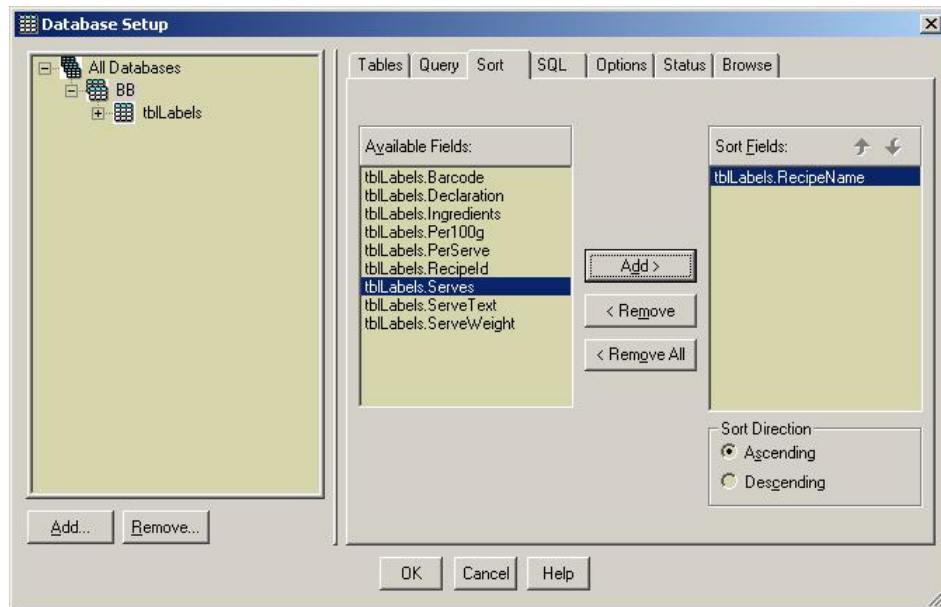
Exporting

To export for MCL printers, simply export as for Bartender. Any information that is generated for Bartender is also written to a database file called “**dRecipeExport.txt**” which resides in the same folder as the current data database and dRtoBT.mdb (by default – the \dRecipe folder)

Appendix C - Producing Labels Directly from Bartender

If, for some reason it is necessary to generate labels directly from Bartender, using the dRtoBt.mdb ODBC database, then it is suggested that a separate master format file be used for each ODBC database.

1. Load Bartender, and open the Master.btw format file in the same location as the data that you want to work with.
2. Select File, Database Setup. All databases will be highlighted. Select the ODBC database that has been configured for this format file.



The ODBC name used in the above graphic is called “BB”. Select the **Sort** Tab, click on the available field in the left column called tblLabels.RecipeName, then click on **Add**.

3. Now click on **Browse** to view the data in the database. The data will be displayed in ascending alphabetic order.
4. Click OK, then click on File, Save As. Name the file LocalMaster.btw.
5. Close Bartender.

When recipes need to be printed directly from Bartender, instead of selecting the Master format file (which is used by dRecipe©), select the LocalMaster format file so that the recipes can be viewed in alpha order. Remember that if the Master file layout is changed at any time, it must also be saved with “Save As” to the new (LocalMaster) file name, and the LocalMaster file opened so that the sort switch can be activated.